

The Worm Factory[®] The Composter that Works!

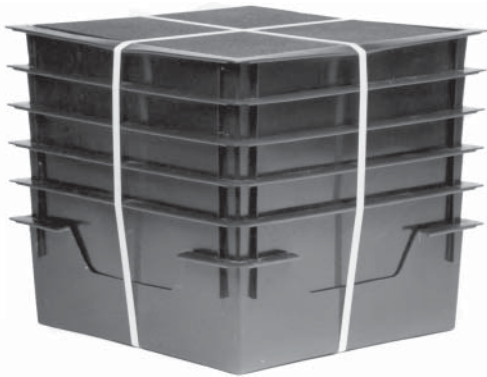
How Does the Worm Factory[®] Work?

Worm composting is an incredibly efficient way to convert kitchen scraps, junk mail and cardboard into nutrient-rich compost for your garden. The Worm Factory's[®] unique design makes it the most efficient worm composter around!

The Worm Factory[®] is a stackable, multi-tray composting worm bin system. Worms begin eating waste in the lowest tray, and then migrate upward as food sources in that tray are exhausted. By allowing worms to migrate upward, the worms separate themselves from the finished compost that is then ready for your garden.

As waste composts in your Worm Factory[®], moisture filters through the composter, dragging nutrient-rich particles with it. This liquid fertilizer, known as leachate, gathers in the collection tray below and can be easily drained from the spigot.

When properly managed, the Worm Factory[®] is odorless, making it perfect for indoor use. Its stackable design allows you to continue adding trays to meet your growing composting needs!



Features:

- Year-round production
- Odor Free operation
- Available in three, four or five tray options
- Expandable up to 7 trays
- Available in black, green and terracotta
- Easy to assemble and manage
- Built in "wormtea" collector tray and spigot for easy draining
- Includes a 16-page easy-to-use instructional booklet with photos and illustrations
- Comes with "Quick-Tips" lid for easy reference
- Houses eight to twelve thousand worms that consume 5-8lbs of food per week
- 5 year warranty on parts and workmanship
- Made in the U.S.A.

Every Worm Factory® is made in the U.S.A. with high-quality post-consumer recycled plastics.



Benefits of the Worm Factory®:

Saves Space: Its compact square design gives the Worm Factory® the smallest footprint of all worm composters. The Worm Factory's® tray stacking system allows it to hold the largest capacity of compost in the smallest amount of space, making it perfect for anyone with space limitations.

Easy to Manage: The Worm Factory® is simple to operate. When full, each tray weighs only 12.5 pounds, making lifting and arranging trays effortless. The included 16-page instruction manual makes setup fast and easy and gives detailed tips on how to best manage your Worm Factory® year-round.

Odorless: When managed correctly, the Worm Factory® is virtually odorless, making it the perfect composter for apartments, kitchens, garages, porches and more!

Saves Time: Let the Worm Factory® do the work for you! Instead of spending time turning piles of compost yourself and removing worms by hand, the multi-tray system separates the worms from the compost so you don't have to. Also, because the worms continually eat through the waste in the stacked trays, compost is produced at a faster rate than traditional methods of composting.

Produces the Best Compost: The best compost for your garden is all-natural, nutrient-rich compost produced by worms. The Worm Factory® creates the high-quality compost that will help your garden thrive!

